



**DALLAS POLICE DEPARTMENT  
RESPONSE TO RESISTANCE  
2016 ANNUAL REPORT**

## Dallas Police Department Response to Resistance Philosophy

The Dallas Police Department uses a Linear Response-to-Resistance Continuum as its training model. The Response Continuum is a concept used in incident handling that simultaneously recognizes the level of subject resistance encountered and the level of control required for the situation. It is an overview that does not direct a particular officer on how much control to use in a particular situation. It gives direction in the escalation and de-escalation of resistance and the escalation and de-escalation of control necessary in police incidents. It explains that many variables are involved in situations where an officer must control a subject.

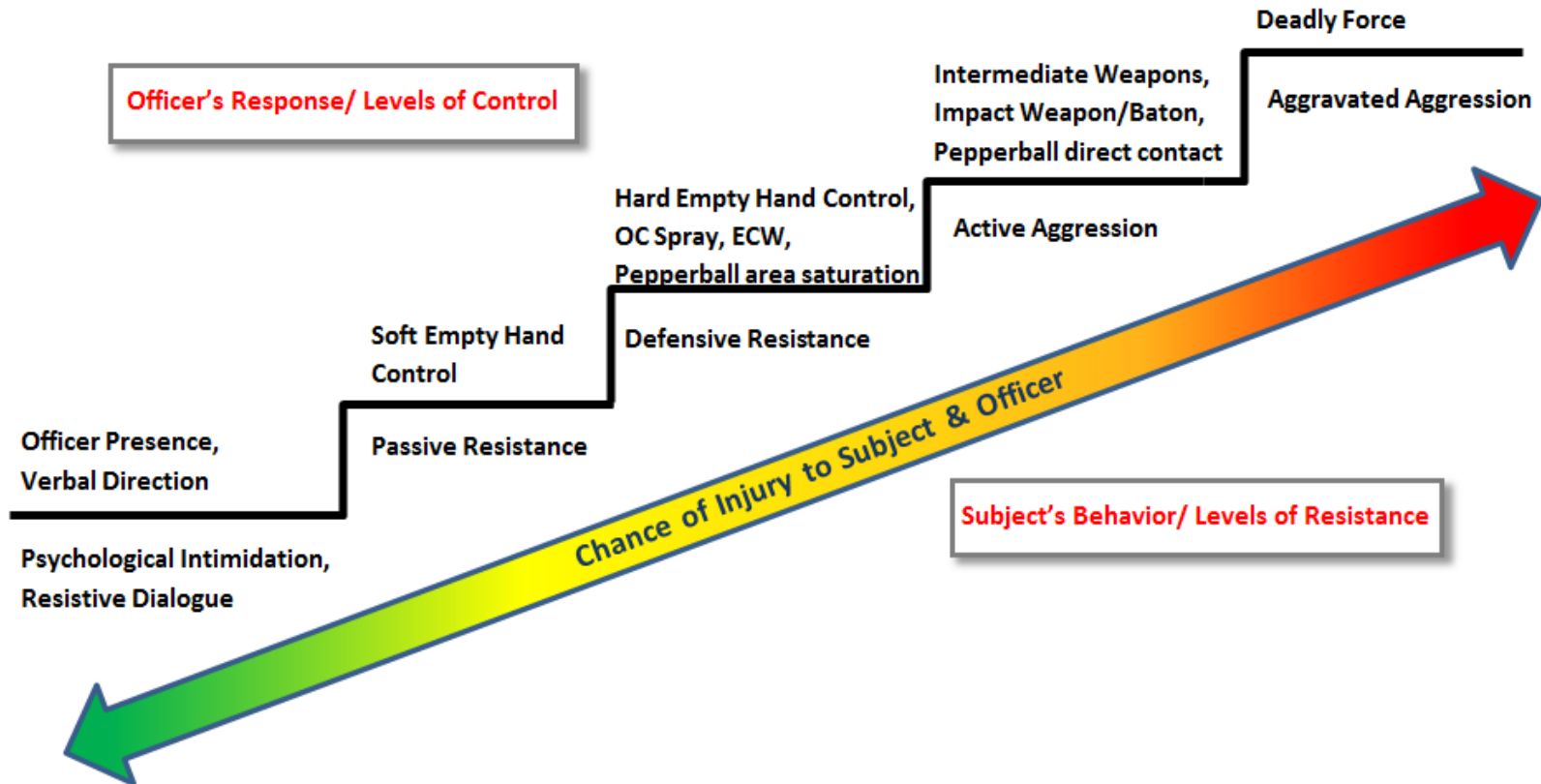
Skillful use of the options identified in the Response Continuum decreases the necessity to respond with physical control techniques and increases the probability of bringing the incident to a successful conclusion. The physical control techniques used may range from the use of handcuffs in an arrest, strikes with an impact weapon, or the use of a firearm. In all cases, the Dallas Police Department dictates that only reasonably necessary control techniques are justified. Any use of control techniques above that would be unjustified and the goal of control violated.

Where there is no apparent need to take a suspect into immediate physical custody, officers should utilize tactics designed to de-escalate the situation and facilitate a safer resolution whenever reasonably possible. The use of delaying tactics in order to obtain more favorable physical cover and additional officer presence is encouraged, as long as the safety of the officer, citizens, and subject is not compromised in doing so.

# Response Continuum Model

## Dallas Police Department

### Linear Response Continuum



# Dallas Police Department

## Response to Resistance Reporting Requirements

On January 1, 2013, the Dallas Police Department began to require officers to enter a separate report on their response to resistance encountered. The Department's current policy states the completion of a Response to Resistance Report will be required in the following instances:

Any Response to Resistance that is Soft Empty Hand Control or above on the Response Continuum, with the exception of "Compliant Handcuffing" only. This will include, but not be limited to the following:

1. All take-downs, pressure points, joint locks.
2. Any use of Oleoresin Capsicum Chemical Spray.
3. Any deployment of the Pepperball System.
4. Personal weapons such as hands and feet.
5. Any use of the baton or any other type of instrument that is used as an impact weapon.
6. Any use of an Electronic Control Weapon (Taser).
7. The deployment of a firearm which is pointed directly at any individual. This will NOT include when any firearm is deployed as part of a warrant process or felony stop.

Each officer will document their response to resistance separately and write their own narrative. (The only exception to this will be Firearm Display where one officer may do the report for multiple officers if the only use of force is a Firearm Display.)

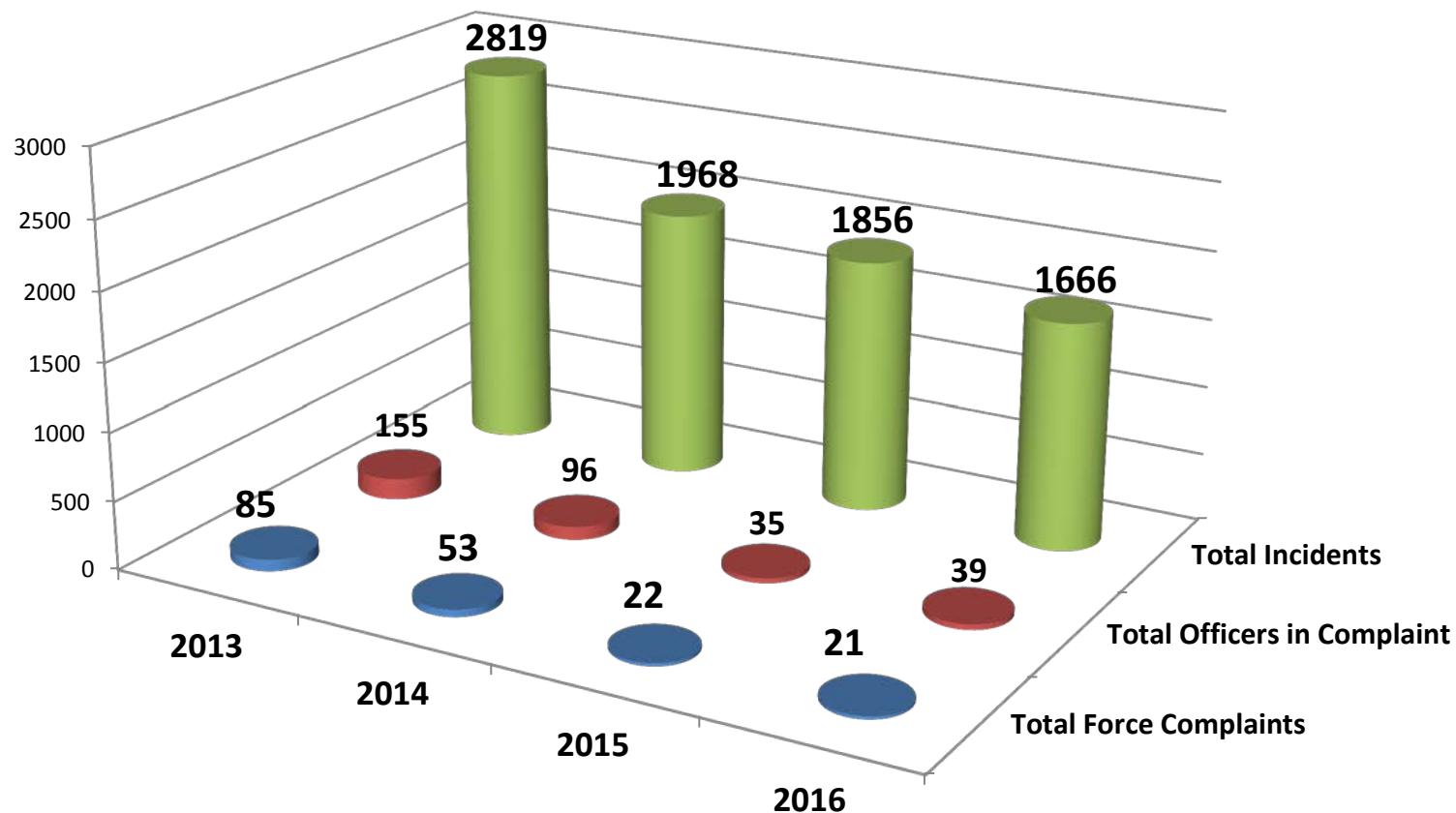
Note: A firearm discharge will not be reported in this system and requires a full investigation by Internal Affairs. All officer involved shooting (OIS) data is available at [www.dallaspolice.net](http://www.dallaspolice.net).

# Inappropriate Force Complaints Received 2010 – 2016\*

YEAR	Total Force Complaints	% Change Prev Yr	Total Officers Complained On	% Change Prev Yr
2010	127	-13.6%	230	1.8%
2011	118	-7.1%	189	-17.8%
2012	81	-31.4%	135	-28.6%
2013	85	4.9%	155	14.8%
2014	53	-37.6%	96	-38.1%
2015	22	-58.5%	35	-63.5%
2016	21	-4.5%	39	11%

\* Annual numbers change based on status of reports as of 3/22/17.

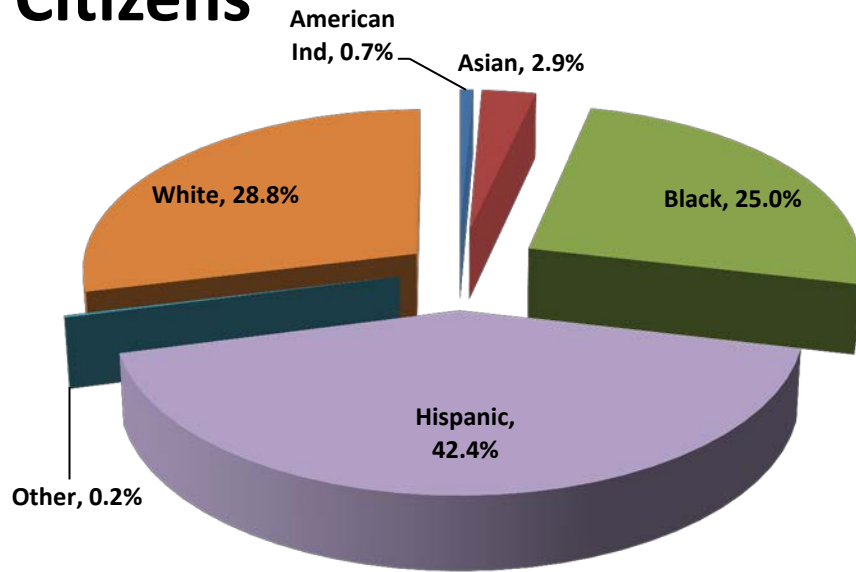
# Total Response to Resistance Incidents vs. Complaints & Officers Involved in Inappropriate Force Allegations 4 Year Comparison \*



\*Annual numbers may change based on status of Response to Resistance Reports and current investigations. These numbers are reports received as of 3/22/17.

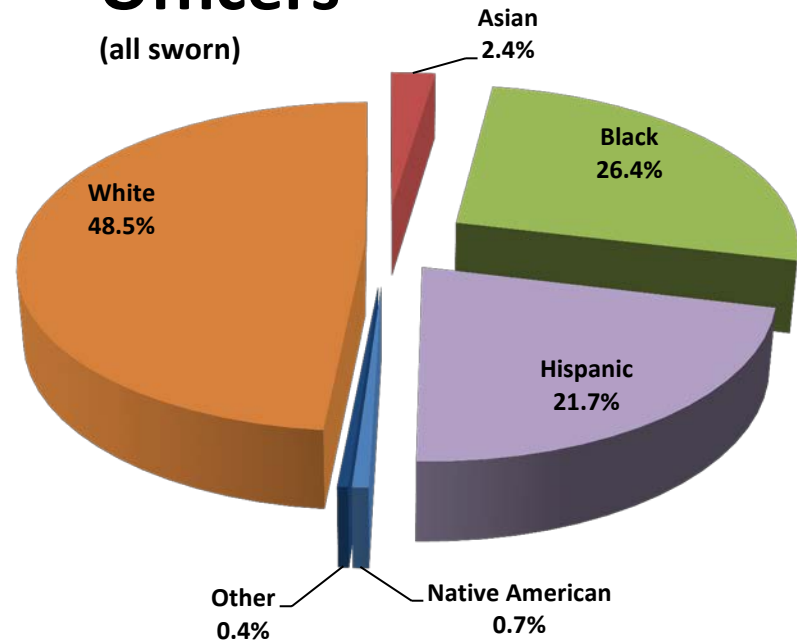
# City of Dallas Citizen vs Officer Demographics\*

## Citizens



## Officers

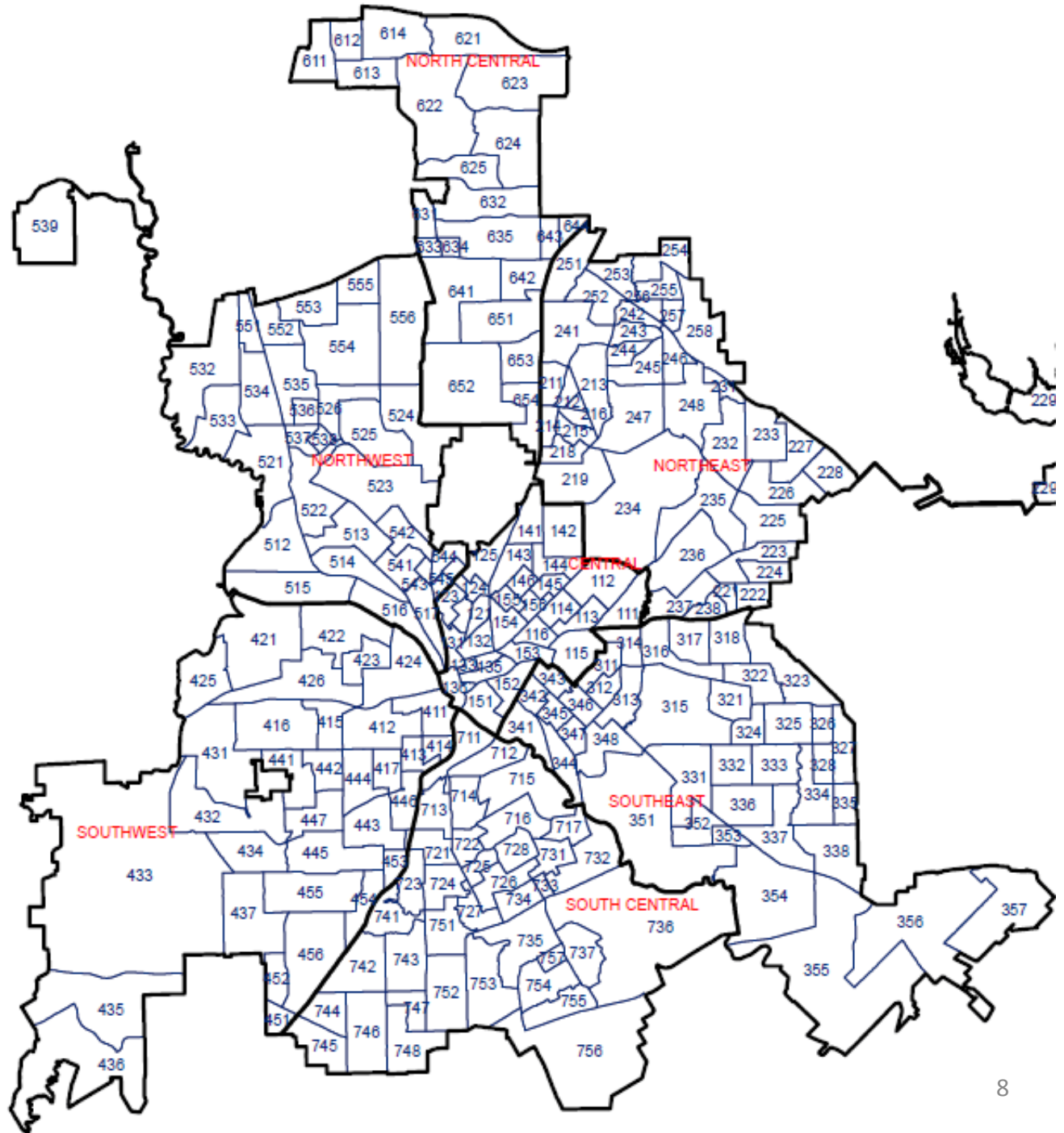
(all sworn)



\* Citizen data based on 2010 Census. Officer data from IWM as of 3/22/17.

# City of Dallas

## Geographic Divisions and Beats





# Citizen Demographics by Geographic Division

Division	CE	NE	SE	SW	NW	NC	SC	Totals
SQ_MILES	17.7	86.7	63.4	75.0	50.0	36.9	55.2	367.2
Population	104001	240999	176265	211962	140287	196461	127841	1093815
WHITE	53904	92997	17028	21745	48140	107154	4237	291301
%WHITE	51.83%	38.59%	9.66%	10.26%	34.32%	54.54%	3.31%	26.6%
BLACK	10669	51758	57484	45882	12818	25865	89683	283490
%BLACK	10.26%	21.48%	32.61%	21.65%	9.14%	13.17%	70.15%	25.9%
AM_IND	410	712	403	535	317	529	261	2757
%AM_IND	0.39%	0.30%	0.23%	0.25%	0.23%	0.27%	0.20%	0.3%
ASIAN	3327	11128	663	2159	3788	11939	605	30282
%ASIAN	3.20%	4.62%	0.38%	1.02%	2.70%	6.08%	0.47%	2.8%
NHPI*	48	61	16	46	34	82	24	263
%NHPI	0.05%	0.03%	0.01%	0.02%	0.02%	0.04%	0.02%	0.0%
OTHER_RACE	158	373	178	217	234	525	139	1666
%OTHER	0.15%	0.15%	0.10%	0.10%	0.17%	0.27%	0.11%	0.2%
MULTI_RACE	1353	3266	1051	1273	1069	3237	983	10879
%MULTI	1.30%	1.36%	0.60%	0.60%	0.76%	1.65%	0.77%	1.0%
HISPANIC	34132	80704	99442	140105	73887	47130	31909	473177
%HISPANIC	32.82%	33.49%	56.42%	66.10%	52.67%	23.99%	24.96%	43.3%

2010 Census Data, \*NHPI=Native Hawaiian or Pacific Islander

## Officer Responses to Resistance Involved Citizen Race by Geographic Division 2014 - 2016

Division	Race	2014	2015	2016	Division	Race	2014	2015	2016
Central	Asian	6	2	3	Northwest	Asian	2	0	0
	Black	125	110	188		Black	70	63	40
	Hispanic	72	52	66		Hispanic	75	87	60
	Other	14	11	14		Other	7	2	5
	White	132	107	93		White	69	54	41
Northeast	Asian	1	7	1		North Central	Asian	2	3
	Black	183	210	137	Black		66	70	74
	Hispanic	55	58	42	Hispanic		27	37	50
	Other	5	13	1	Other		7	5	2
	White	61	67	36	White		58	82	73
Southeast	Asian	0	0	0	South Central		Asian	2	0
	Black	239	209	149		Black	249	216	187
	Hispanic	69	87	50		Hispanic	24	23	15
	Other	10	6	4		Other	3	4	2
	White	42	32	24		White	20	18	9
Southwest	Asian	1	0	0					
	Black	137	113	78					
	Hispanic	124	115	87					
	Other	7	7	4					
	White	30	36	17					

# Citizen vs Officer Injured in Response to Resistance

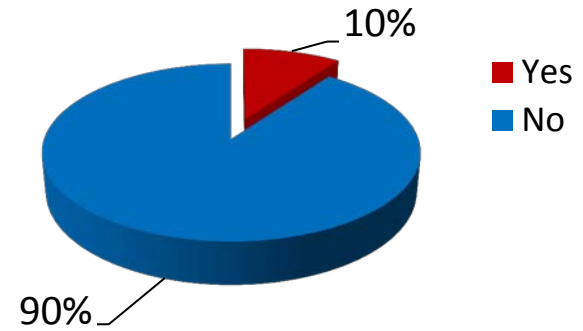
## Citizen Injured

2015

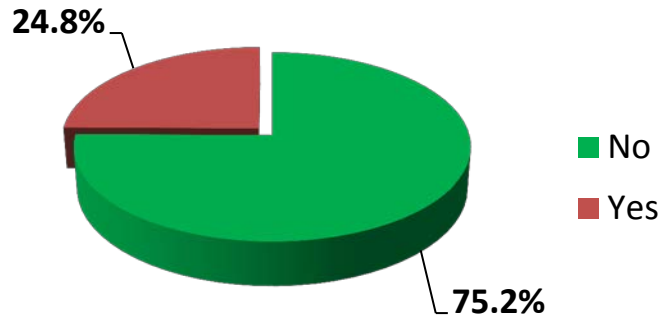


## Officer Injured

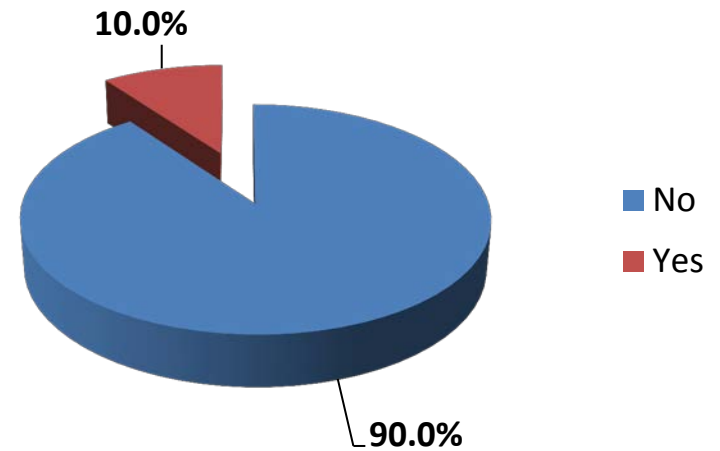
2015



2016



2016



# Citizens and Officers Injured in Responses to Resistance Incidents

<b>Citizen Injured</b>	<b>2014</b>	<b>2015</b>	<b>2016</b>
Yes	30%	26%	25%
No	70%	74%	75%

<b>Officer Injured</b>	<b>2014</b>	<b>2015</b>	<b>2016</b>
Yes	12%	10%	10%
No	88%	90%	90%

## RESPONSE TO RESISTANCE STATISTICS

### Officer Responses to Resistance Defensive Techniques Top Types 2014 - 2016 Comparison

2014		2015		2016	
Verbal Command	1481	Verbal Command	1637	Verbal Command	1395
Take Down- All Types	856	Take Down- All Types	944	Take Down- All Types	866
Held Suspect Down	827	Held Suspect Down	934	Held Suspect Down	851
Weapon Display	782	Balance Displacement	780	Balance Displacement	674
Balance Displacement	709	Weapon Display	683	Weapon Display	476
Joint Locks	523	Joint Locks	460	Joint Locks	432
<hr/>					
Total Response Techniques Documented	<b>7227</b>	Total Response Techniques Documented	<b>6739</b>	Total Response Techniques Documented	<b>6001</b>

## Response to Resistance Incidents\* by Citizen Demographic Type 2015 vs 2016

2015			2016**	
Race Type	Count	% of Total	Count	% of Total
American Indian / Native American	3	0.2%	1	0.1%
Asian or Pacific Islander	12	0.6%	4	0.3%
Black	991	52.0%	857	54.7%
Latin / Hispanic	459	24.1%	378	24.1%
Other	41	2.1%	7	0.5%
Unknown	4	0.2%	26	1.7%
White	397	20.8%	294	18.8%
<b>Total</b>	<b>1907</b>		<b>1567</b>	

\*Policy requires Response to Resistance Reporting for any greater response than compliant handcuffing. \*\*Reports available as of 1/31/17.

## Officer Responses to Resistance Incidents Involved Officer Race vs Citizen Race 2015 & 2016

Officer Race	Citizen Race	2015	2016
American Indian	Asian	0	0
	Black	6	7
	Hispanic	2	0
	Other	0	0
	White	3	1
Asian	Asian	1	0
	Black	14	28
	Hispanic	19	9
	Other	0	1
	White	11	17
Black	Asian	2	1
	Black	195	202
	Hispanic	67	73
	Other	2	9
	White	56	57

Officer Race	Citizen Race	2015	2016
Hispanic	Asian	0	0
	Black	224	230
	Hispanic	144	141
	Other	1	10
	White	80	104
Other	Asian	0	0
	Black	8	21
	Hispanic	3	2
	Other	0	0
	White	2	4
White	Asian	9	4
	Black	761	846
	Hispanic	350	302
	Other	16	31
	White	307	288

## Officer Responses to Resistance Incidents

### Involved Citizen Race where Citizen Used Active Aggression Against Officer 2015 & 2016

Citizen Race	Officer Race	2015	2016
American Indian	Asian	0	0
	Black	0	0
	Hispanic	0	0
	Other	0	0
	White	0	0
Asian	Asian	0	0
	Black	1	0
	Hispanic	0	0
	Other	0	0
	White	1	2
Black	Asian	0	6
	Black	30	39
	Hispanic	36	24
	Other	2	3
	White	120	109

Citizen Race	Officer Race	2015	2016
Hispanic	Asian	1	0
	Black	10	18
	Hispanic	17	17
	Other	1	1
	White	43	43
Other	Asian	0	0
	Black	0	3
	Hispanic	1	1
	Other	0	0
	White	2	1
White	Asian	4	1
	Black	6	9
	Hispanic	18	20
	Other	1	3
	White	47	46



## Response to Resistance Reports

### Citizen Used Active Aggression Against Officer By Division 2014 -2016

Division	2014	2015	2016
CENTRAL	119	62	106
NORTH CENTRAL	38	33	40
NORTHEAST	69	54	38
NORTHWEST	76	32	33
SOUTH CENTRAL	96	38	41
SOUTHEAST	94	68	36
SOUTHWEST	75	54	52
<b>Grand Total</b>	<b>567</b>	<b>341</b>	<b>346</b>

# Response to Resistance Reports

## Top Beats Citizen Used Active Aggression Against Officer 2014 – 2016

2014	
Beat	Incidents
153	18
521	16
736	14
133	11
343	11
714	10

2015	
Beat	Incidents
424	8
744	7
257	7
133	6
521	6
322	6

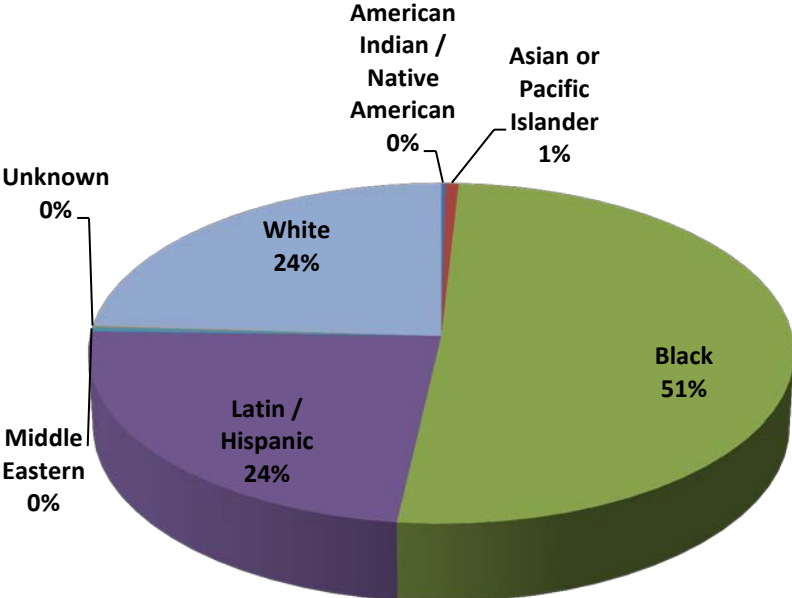
2016	
Beat	Incidents
424	17
133	15
131	12
153	10
122	10
651	9

## Citizen Arrests by Demographic Type\* 2015 vs 2016

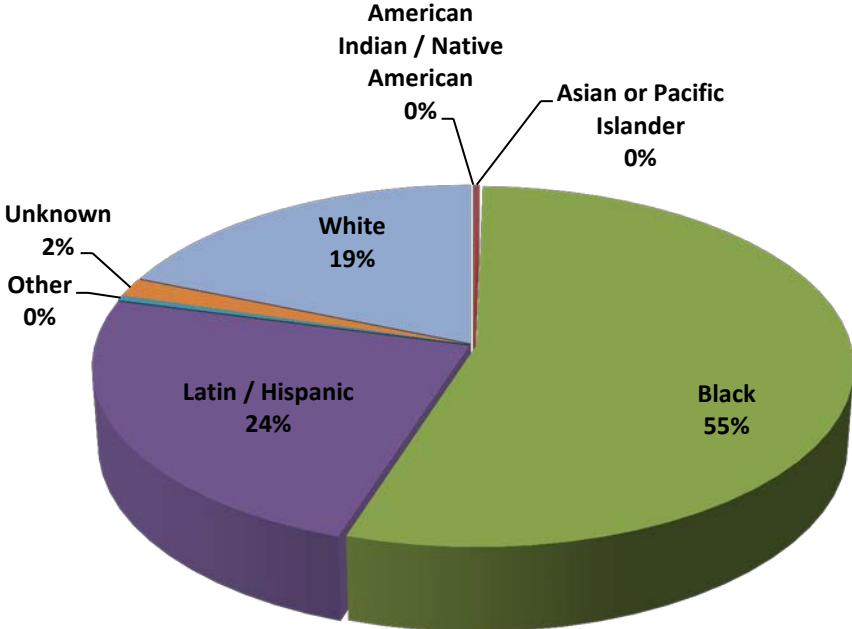
Race by Reported Type	Arrests 2015	% of Total Arrests	Arrests 2016	% of Total Arrests
American Indian / Native American	74	0.2%	110	0.2%
Asian or Pacific Islander	403	0.8%	352	0.7%
Black	24729	50.4%	27078	50.9%
Latin / Hispanic	12049	24.5%	12558	23.6%
Middle Eastern	208	0.4%	233	0.4%
Unknown	44	0.1%	58	0.1%
White	11577	24.0%	12759	24.0%
<b>Total</b>	<b>49084</b>		<b>53148</b>	

# 2016 Arrests vs Responses to Resistance Involved Citizen Race

**Arrests by Citizen Race**



**Response to Resistance Reports by Involved Citizen Race**

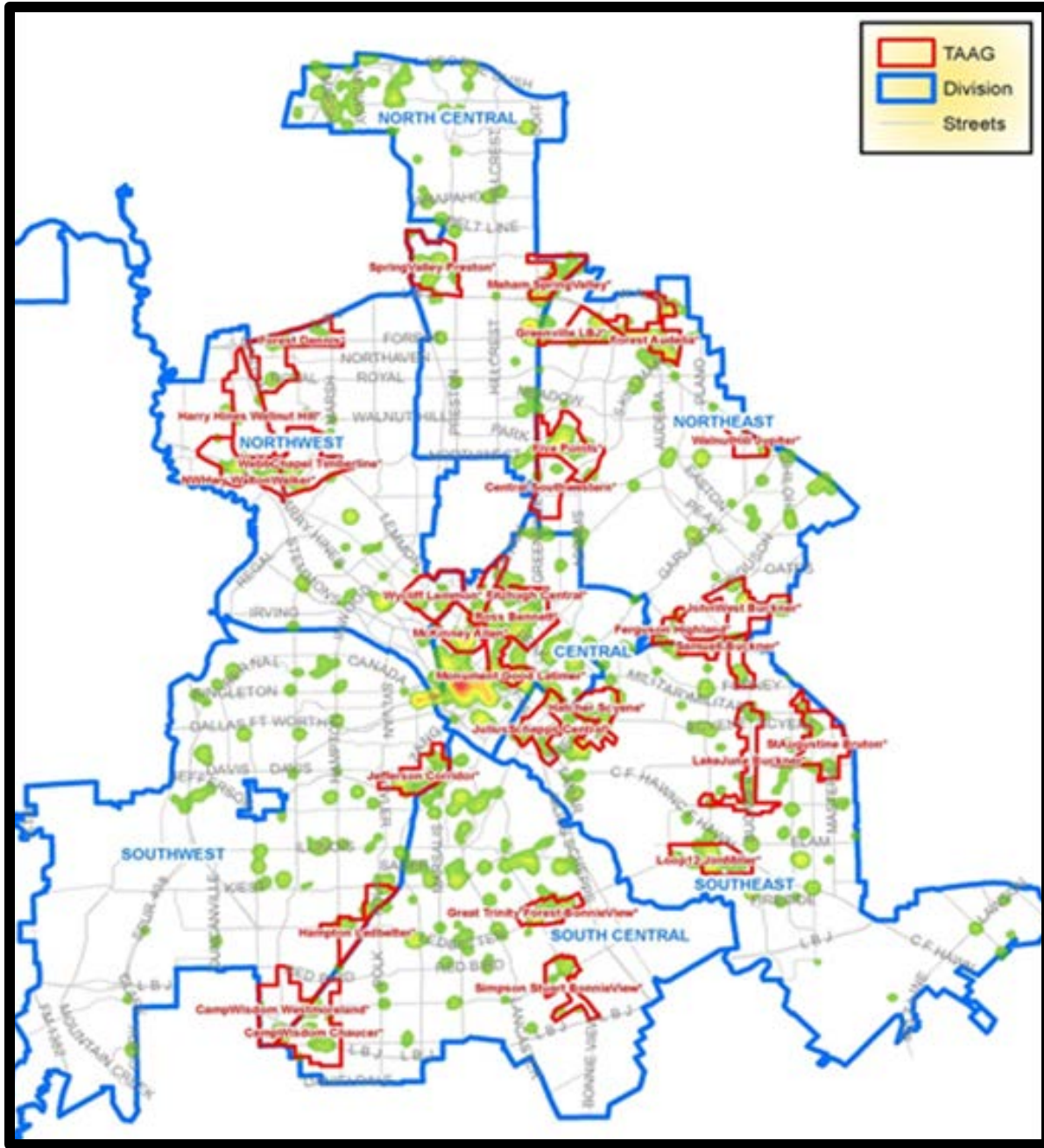


# RESPONSE TO RESISTANCE STATISTICS

## Top Types Citizen Resistances and Arrest Charges

Resistance		
2014	2015	2016
1. Pulling Away	1. Not Following Commands	1. Not Following Commands
2. Not Following Commands	2. Pulling Away	2. Pulling Away
3. Resistive Dialogue	3. Resistive Dialogue	3. Resistive Dialogue
Arrest Charges		
1. APPOW	1. Warrant/Hold	1. Warrant/Hold
2. Warrant/ Hold	2. APOWW	2. APOWW
3. Public Intoxication	3. Resisting Arrest	3. Public Intoxication
4. Evading Arrest	4. Evading Arrest	4. Narcotic Charges

Reported  
Response to  
Resistance  
2016 Density Map



# Response to Resistance Reports

## Top Ten Beats 2016

Beat #	Major Streets	# Incidents Reported
133	Main & Lamar	39
424	Beckley & Commerce	34
131	Houston & Continental	33
134	Main & St. Paul	29
651	Coit & Churchill	27
153	Main & Hall	24
135	St. Paul & Young	22
132	Ross & Pearl	19
521	NW Hwy & Walton Walker	19
614	Haverwood & DNT	18
121	McKinney & Routh	18

# RESPONSE TO RESISTANCE STATISTICS

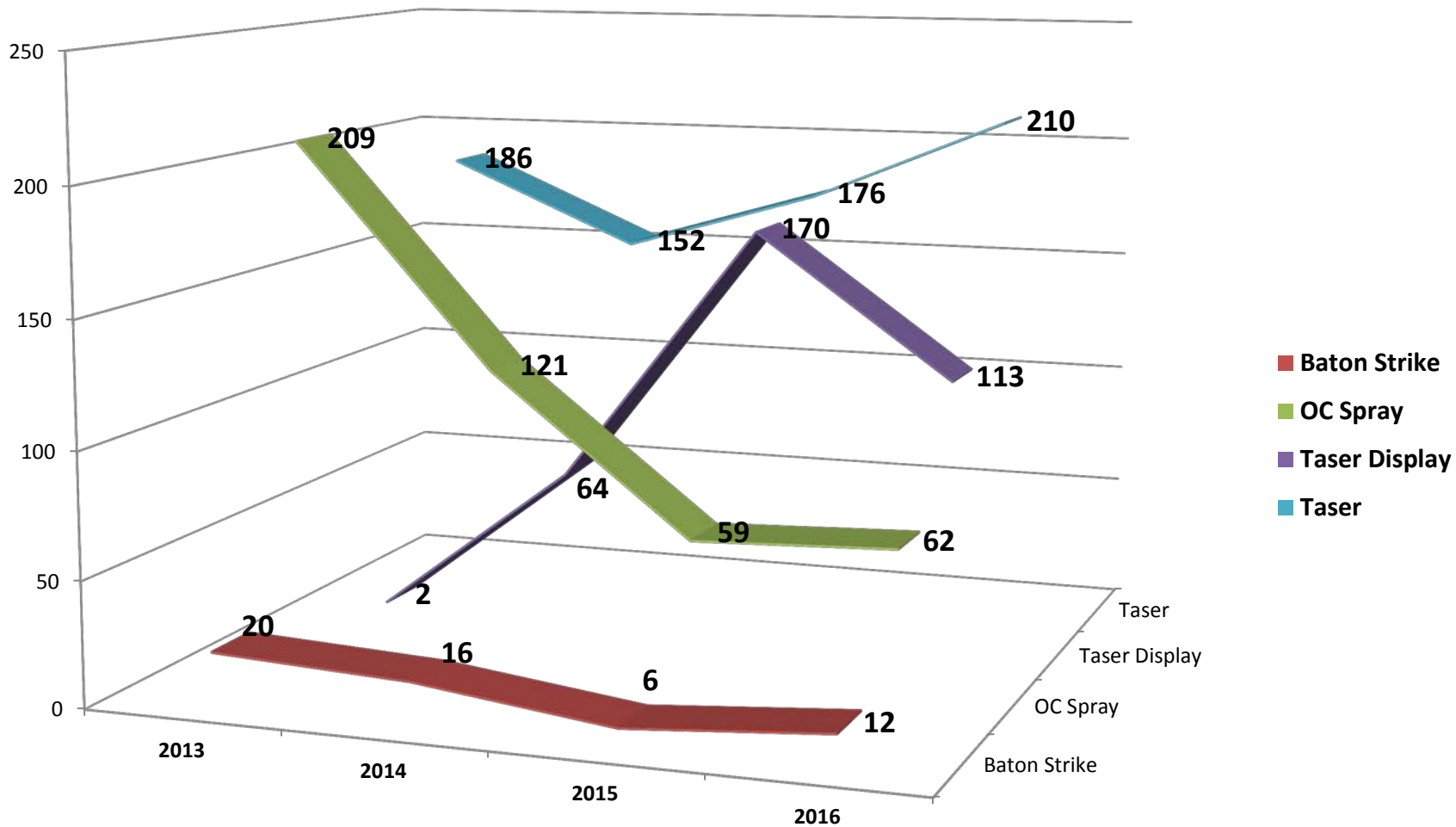
## Officer Responses to Resistance

### Intermediate Weapon Use and Effectiveness Rating Comparisons

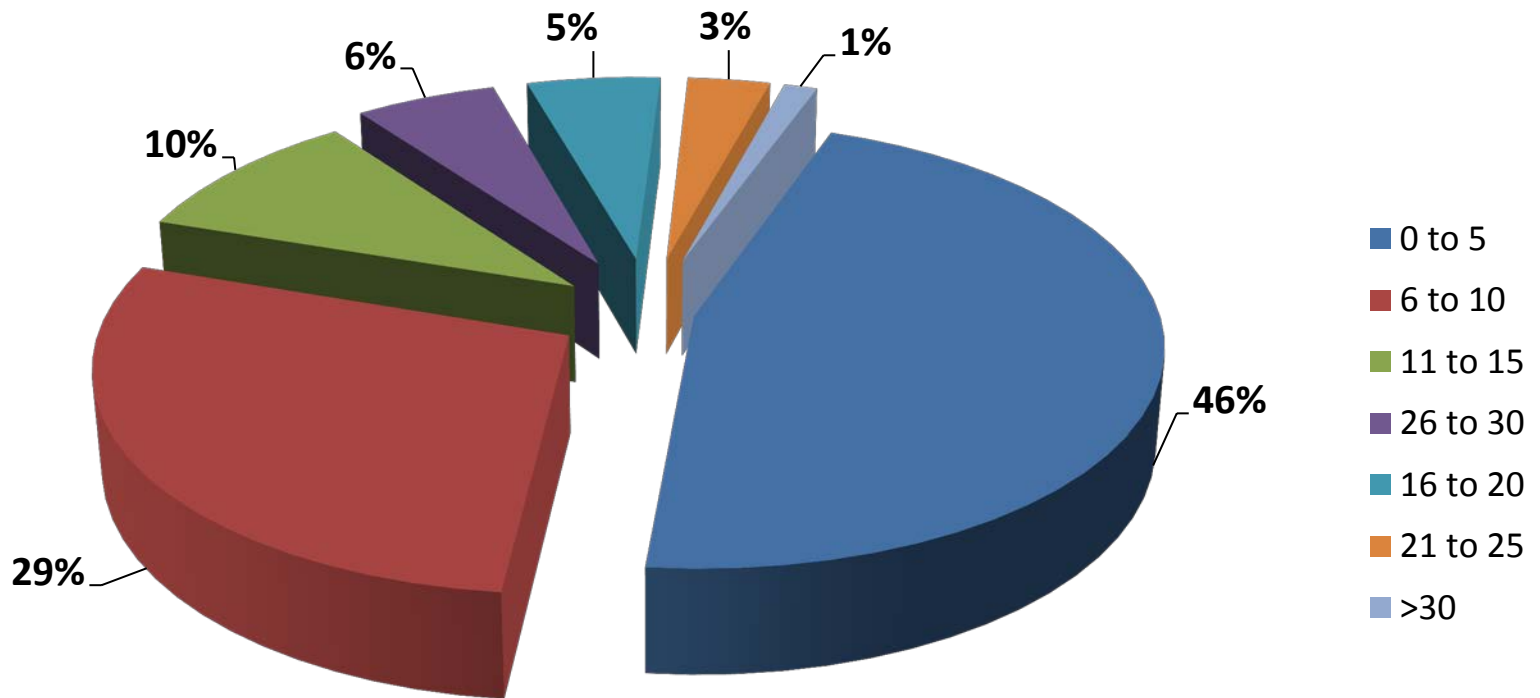
	2013		2014		2015		2016	
Type	Use Reported	% Effective	Use Reported	% Effective	Use Reported	% Effective	Use Reported	% Effective
Baton Display	0	0%	10	60%	7	57%	7	71%
Baton Strike	20	50%	16	63%	6	50%	12	67%
OC Spray	209	78%	121	78%	59	69%	62	76%
Taser Display	2	100%	64	55%	170	62%	113	56%
Taser	186	67%	152	61%	176	59%	210	61%



## Intermediate Weapons Use 2013 - 2016



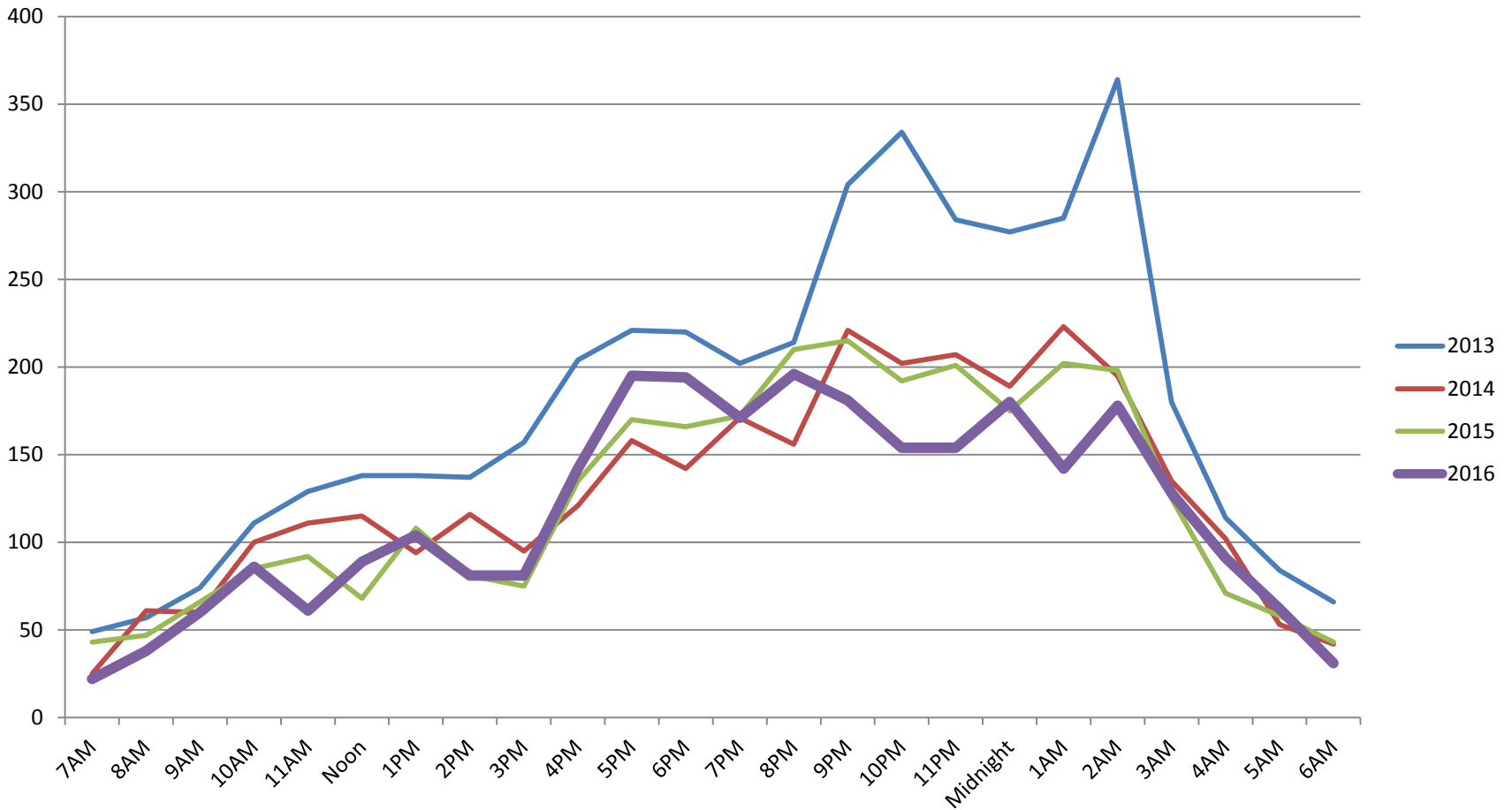
# Years of Service of Officers Involved in Response to Resistance 2016



# Initial Service Being Rendered Requiring Response to Resistance

	2013	2014	2015	2016
Arrest	1017	898	824	805
Call for Cover	105	90	99	90
Crime in Progress	117	92	80	63
Crowd Control	14	19	10	3
Off-Duty				
Employment	106	122	80	52
Off-Duty Incident	23	14	17	10
Other	89	71	61	63
Pedestrian Stop	42	26	25	24
Service Call	607	552	531	444
Suspicious Activity	76	55	39	37
Traffic Stop	119	88	67	63
Warrant Execution	30	18	12	8

# Response to Resistance Occurrences by Hour of Day- 4 Year Comparison



# Dallas Police Department

## Response to Resistance Report

### Executive Summary

The Dallas Police Department has experienced an 83% decrease in excessive force complaints since 2010. There were 21 inappropriate force complaints received for 2016. This indicates a force related complaint in 1.3% of all response to resistance incidents and in 0.04% of all arrests for 2016. There was a 4.5% reduction in excessive force complaints from 2015.

The body worn camera system went live at all seven patrol substations on September 1, 2015, with an initial purchase of 400 cameras. In April 2016, the Department accelerated the contract and purchased 600 additional cameras. The Department anticipates a full deployment of the 1000 body worn cameras by Spring 2017. The Dallas Police Department has adopted body worn cameras in order to:

- Enhance Department transparency to the public, and document the quality of service provided.
- Enhancement of officer safety.
- Enhancement of officer reporting, evidence collection, court testimony, and training.
- Protection from false claims of impropriety.
- Provide accurate documentation of actions and conditions during arrests and critical incidents.

During 2016, Dallas Police Officers made 53,148 arrests and documented 1666 response to resistance incidents (available as of 3/22/17) where force above compliant handcuffing was used. This represents 3.1% of the total number of subjects arrested by the Dallas Police Department. The top two charges filed on citizens, in which a response to resistance report was required in 2014, 2015, and 2016 were “Warrants Only/Hold” and “APPOW.” The number of response to resistance incidents declined from 1856 incidents in 2015 and 1968 incidents in 2014.

In 2016, officers reported 75.2% of the incidents did not result in injury to the citizen requiring hospitalization. This was a slight decrease in reported injuries to citizens compared to 2015. Over 50% of the incidents occurred between 5:00 p.m. and 1:00 a.m.

# Open Source Data Links

- Main Page:
  - <http://www.dallaspolice.net>
- Officer Involved Shootings:
  - <http://www.dallaspolice.net/ois/ois>
- Response to Resistance:
  - <http://www.dallaspolice.net/reports/Pages/response-resistance.aspx>
- Offense/ Arrest:
  - <http://www.dallaspolice.net/publicdata>